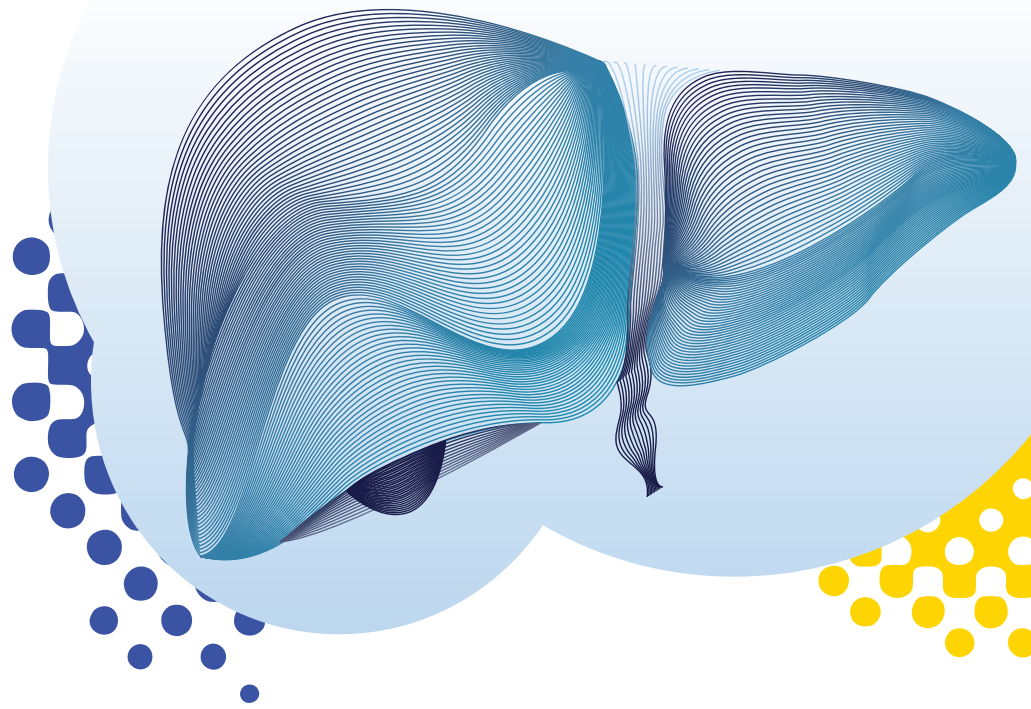


FEB
20
2018



Translational Approaches for Human Liver Disease

➔ Register at www.nyas.org/NASH2018

This symposium will explore emerging *in vitro* models for non-alcoholic steatohepatitis (NASH) to bridge the gap between existing preclinical animal models and human liver disease.

Location

The New York Academy of Sciences
7 World Trade Center
250 Greenwich Street
40th Floor
New York, NY 10007

Event Time

9:00 a.m. – 5:00 p.m.
*Reception to follow

Speakers

Scott Friedman, MD
Icahn School of Medicine
at Mount Sinai

Tracy C. Grikscheit, MD
Keck School of Medicine,
University of Southern California

Ernesto Guccione, PhD
Icahn School of Medicine
at Mount Sinai

Katia Karalis, MD, PhD
Emulate

Leah M. Norona, PhD
University of North Carolina,
Chapel Hill

Paulina Ordonez, MD
University of California San Diego

Robert Schwartz, MD, PhD
Weill Cornell Medicine

Michael Shuler, PhD
Cornell University

Brian Wamhoff, PhD
HemoShear Therapeutics

Deadlines

Poster Abstract Deadline: **Tuesday, January 9, 2018**

Presented By

The Biochemical Pharmacology Discussion Group at the New York Academy of Sciences

Translational Approaches for Human Liver Disease

➔ Register at www.nyas.org/NASH2018

Scientific Organizing Committee

John Broadwater, PhD
Boehringer Ingelheim

Scott Friedman, MD
Icahn School of Medicine
at Mount Sinai

John Hambor, PhD
Boehringer Ingelheim

Joel Lavine, MD PhD
Columbia University

Steven Pullen, PhD
Boehringer Ingelheim

Claire Steppan, PhD
Pfizer

Gregory Tesz, PhD
Pfizer

Sonya Dougal, PhD
The New York Academy of Sciences

Speakers

Scott Friedman, MD
Icahn School of Medicine
at Mount Sinai

Tracy C. Grikscheit, MD
Keck School of Medicine,
University of Southern California

Ernesto Guccione, PhD
Icahn School of Medicine
at Mount Sinai

Katia Karalis, MD, PhD
Emulate

Leah M. Norona, PhD
University of North Carolina,
Chapel Hill

Robert Schwartz, MD, PhD
Weill Cornell Medicine

Michael Shuler, PhD
Cornell University

Paulina Ordonez, MD
University of California San Diego

Brian Wamhoff, PhD
HemoShear Therapeutics

The Biochemical Pharmacology Discussion Group is
proudly supported by:



REGENERON

American Chemical Society New York Section

Members
Save Up To
\$100

To join, visit
www.nyas.org/join

 @NYASciences
#NASH2018